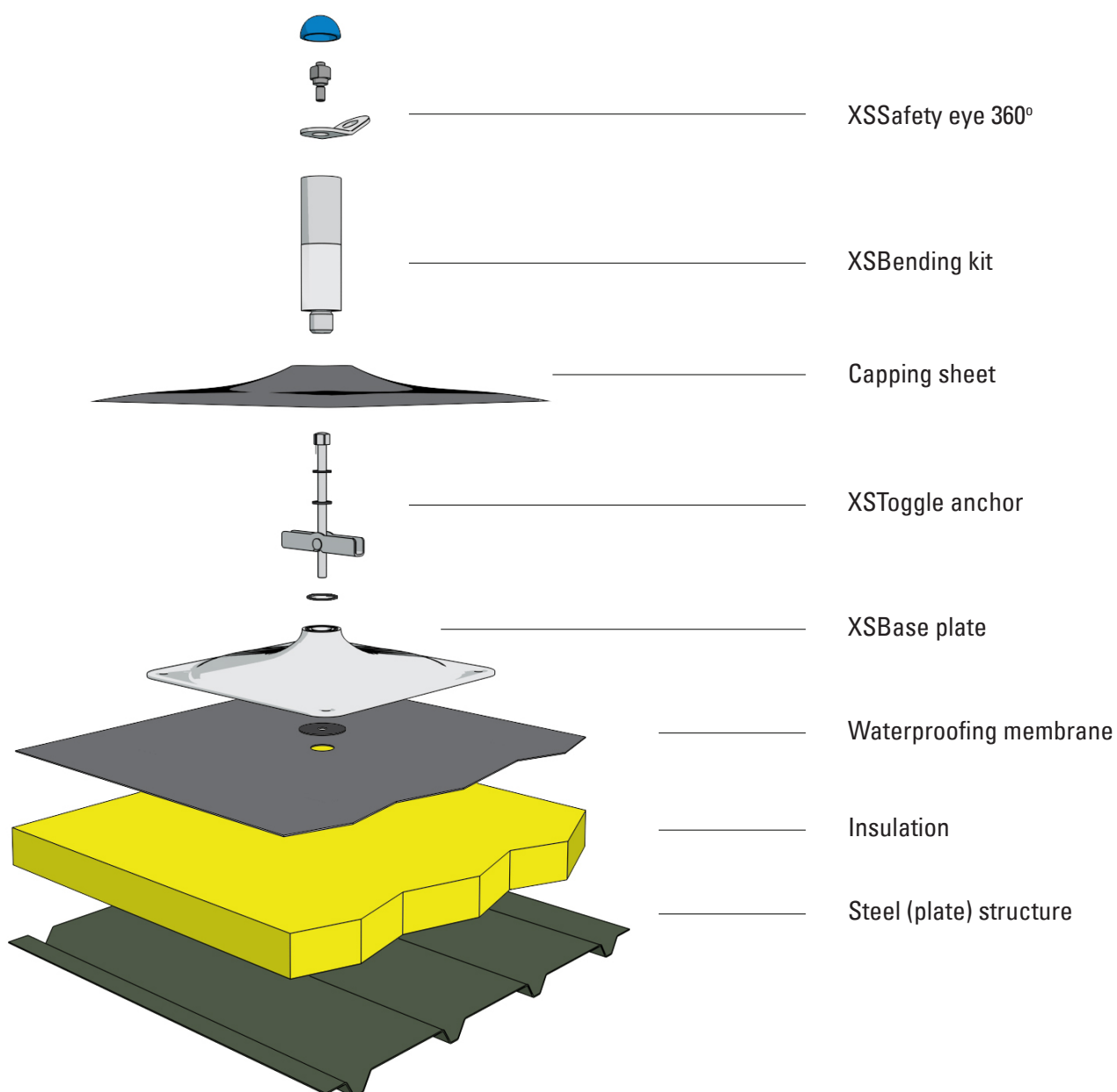


The XSGlobe anchorage point comprises two main components: the XSGlobe eye and the XSBase plate, which is fixed to the roof and holds the XSGlobe eye. The XSGlobe is used as a stand-alone anchorage point and/or as an anchorage point to Personal Protective Equipment (PPE). The XSImpact 360° combines the XSImpact with the XSGlobe anchorage point and absorbs the shock of a fall; and the XSBase plate, which is fixed to the roof and holds the XS Bending kit. These anchorage points can also be installed on the XSXtrusion.

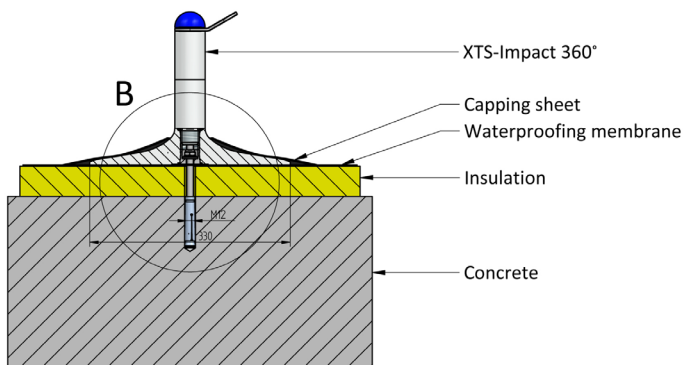
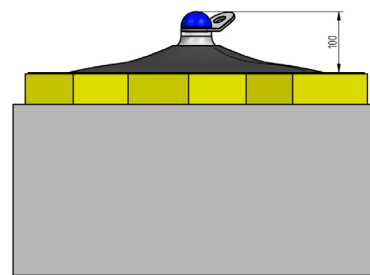
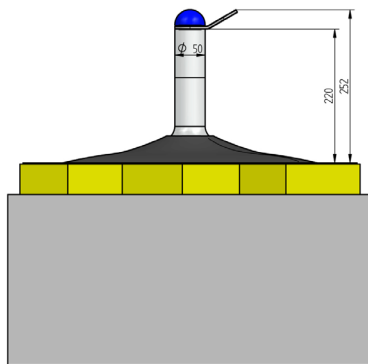
Exploded view



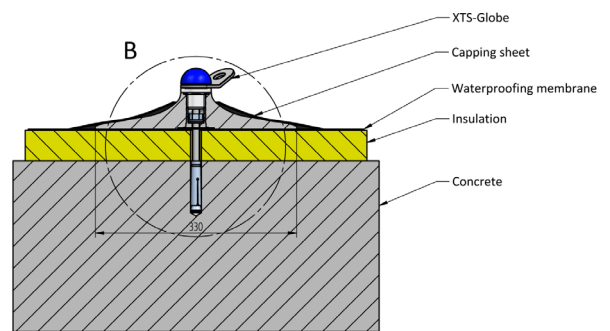


- Suitable for: all types of roofs or systems
- By mounting on top of the isolation and roofing, you minimize the damage to the roof
- A XSGlobe eye/XSSafety eye 360° can be used in every direction, giving you maximum freedom of movement
- All XSPlatforms' anchorage points are tested according EN795 class A1 and C

Drawings & impressions



SECTION A-A



SECTION A-A

Parts & Materials

11100	XS Bending kit	Stainless Steel AISI 304 *	Aluminum
11110	XS Base plate	Stainless Steel AISI 304 *	Aluminum
11210	XSGlobe eye	Stainless Steel AISI 304 *	
11260	XSSafety eye 360°	Stainless Steel AISI 304 *	
11300	XSToggle anchor	Stainless Steel AISI 304 *	
11400	XS Mechanical anchor	Stainless Steel AISI 304 *	Galvanized steel
11700	XS Base plate extra (18 mm)	Aluminum	

* Parts also available in Stainless Steel AISI 316

Parts & Materials

XSImpact - 11100



The XSImpact is used to support the XSLinked system, as a stand-alone anchorage point and as an anchorage point in horizontal temporary lifeline systems. The anchorage point is tested according to the EN795 in classes A1 and C.

The anchor will not be activated until a force of 3kN is applied to the anchor. The anchor is tested against a continuous force of 10kN. The ultimate strength after deployment is greater than 20kN.

XSBase plate - 11110



Attachment of the XSBase plate depends on the roof type. Use XSToggle anchor (11300) with wooden or steel roofs and the XSMechanical anchor (11400) with concrete or hollow section concrete roofs. The anchor is tested against a continuous force of 10kN. The ultimate strength after deployment is greater than 20kN.

XSGlobe eye - 11210



The XSGlobe is used as a stand-alone anchorage point and as an anchorage point to PPE. The anchorage point is tested according to the EN795 in classes A1 and C.

XSSafety eye 360° - 11260

The XSImpact 360° is used as a stand-alone anchorage point and as an anchorage point to PPE. The anchorage point is tested according to the EN795 in classes A1 and C.

The anchor will not be activated until a force of 3kN is applied to the anchor. The anchor is tested against a continuous force of 10kN. The ultimate strength after deployment is greater than 20kN.

XSToggle anchor - 11300



The XSToggle anchor is used for fixing the anchorage point to the roof. Its special shape allows the anchor to be pushed through the roofing.

Parts & Materials



XS Mechanical anchor - 11400

The XS Mechanical anchor is used for fixing the anchorage point to the roof. It is a Fischer anchor specially developed for high strength mounting in concrete.



Extremity and corner fixation - 11500

The extremity and corner fixation is a set of screws used for fixing corners and extremity posts of the XSLinked lifeline system on steel and wooden roofs. The screws fit the holes in the corner of the XSBase plate and XSBase plate extra.

The length of the screws depends on the thickness of the insulation material. The screws provided are suitable for most applications. If you require different screws, please contact our sales department. Make sure that the Ø6 screws you use are at least 35 mm longer than the thickness of the insulation!



XSBase plate extra (18 mm) - 11700

The XSBase plate extra (18 mm) is used beneath the XSBase plate for installing the XSImpact, XSGlobe and XSImpact 360° on wooden roofs.



XSBase plate extra (12 mm) - 11710

The XSBase plate extra (12 mm) is used under the XSBase plate to assemble the XSImpact, XSGlobe and XSImpact 360° to (12 mm) plywood roofs. The aluminum adapter plate is mounted to the roof using four M10 XSToggle anchors.



XSXtrusion - 11800

The XSXtrusion is used to support the XSLinked system. It could also be used as a stand-alone anchorage point and as an anchorage point in horizontal temporary anchor line and in combination with a XSSafety eye 360°.